

# Getting Started with Tableau Desktop

Welcome to Tableau Desktop 6.0. In this guide you can follow along using sample data to learn how to connect to data and build views.

## 1. Connect to Data

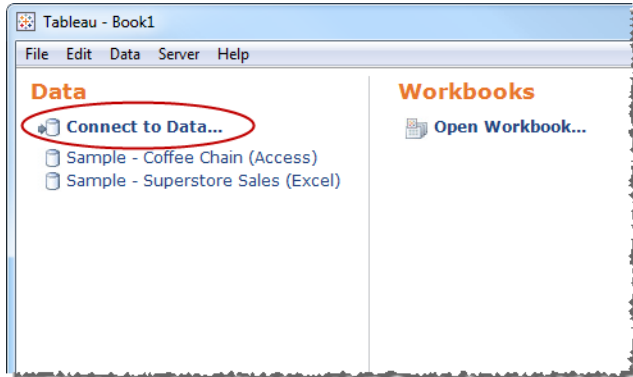
## 2. Create Your First View

## 3. Learn More About Tableau

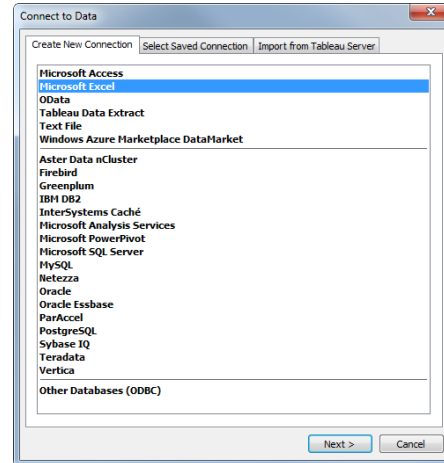
# Connect to Data

The first thing to do when you start Tableau is connect to a data source. Follow the steps below to connect to a sample Excel workbook that comes with Tableau.

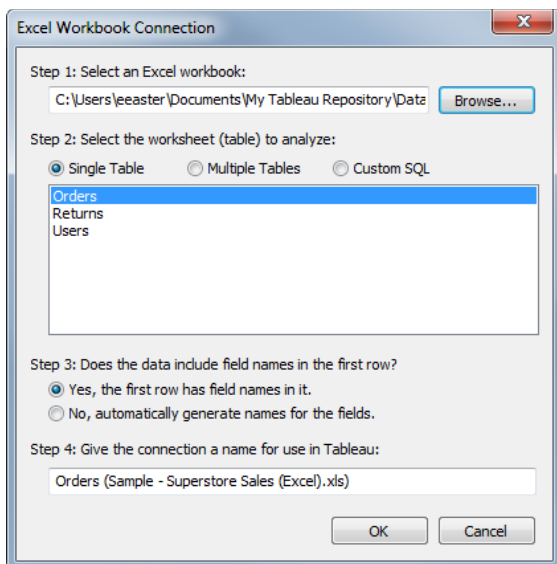
## 1 Select Connect to Data on the start page.



## 2 Select the type of data source. For this example, select Microsoft Excel and click OK.



## 3 Set up the connection. Click Browse to select the Sample-Superstore Sales workbook located in the Datasources folder in your Tableau Repository. Then select the Orders worksheet and click OK.



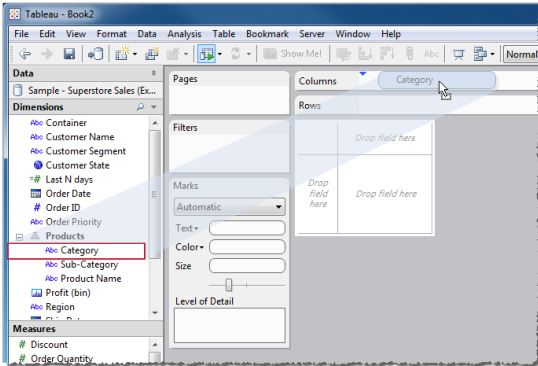
Your Tableau Repository is located in your My Documents folder.

**Note:** If you are having problems connecting to an Excel workbook of your own, make sure each worksheet is organized into rows and columns properly. To see an example of how to set up your Excel data, open the sample file that comes with Tableau. You can find it in your documents folder located at: **My Tableau Repository\Datasources\Sample - Superstore Sales (Excel).xls**.

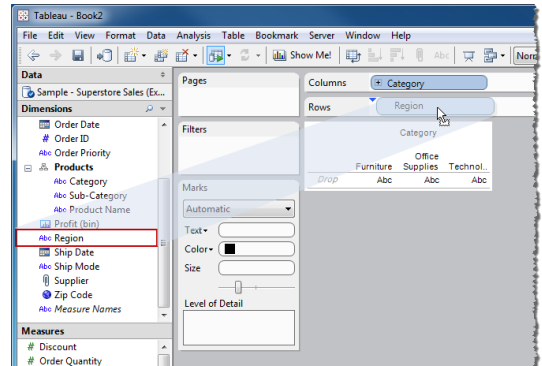
# Create Your First View

After you connect to a data source, fields are displayed on the left side of the workbook as Dimensions and Measures. Create views by dragging and dropping fields onto shelves.

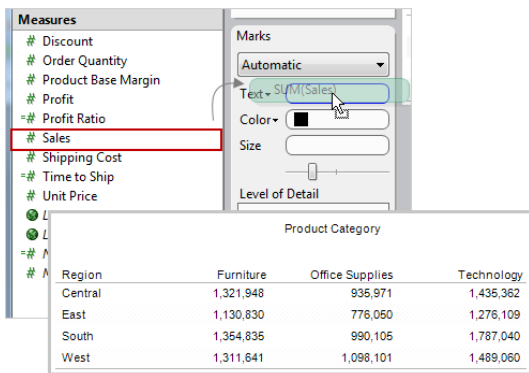
- 1 Drag a dimension to the Columns shelf.**  
Click and drag the **Category** field and drop it on the **Columns** shelf.



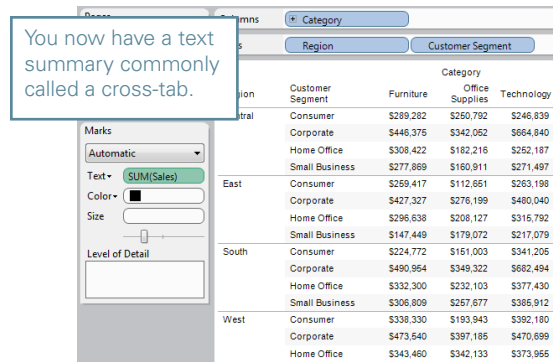
- 2 Drag a dimension to the Rows shelf.**  
Click and drag the **Region** field and drop it on the **Rows** shelf.



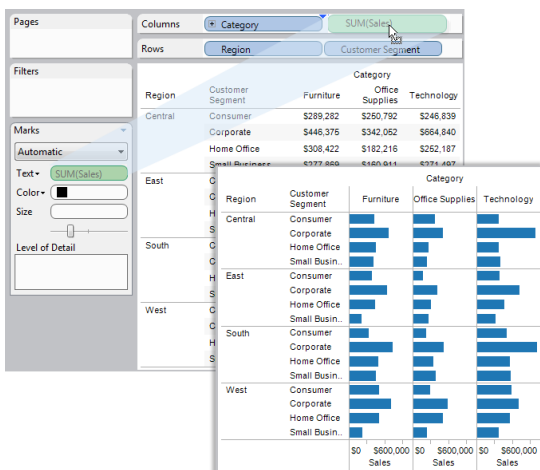
- 3 Drag a measure to the Text Shelf.**  
Click and drag the **Sales** measure and drop it on the **Text** shelf.



- 4 Drag another dimension to the Rows shelf.**  
Click and drag the **Customer Segment** field and drop it on the **Rows** shelf.



- 5 Visualize your data.**  
Drag the **Sales Total** measure from the Text shelf and drop it on the **Columns** shelf.



- 6 Use color to show more information.**  
Drag the **Region** dimension from the Data window and drop it on the **Color** shelf.



See what else you can discover just by dragging and dropping.

You can now quickly pick out the best and worst products, regions, and markets.

## Learn More About Tableau



# Live Online Training

Tableau offers FREE live training on the web.  
Tune in to learn more!

**Register Now!**

visit <http://www.tableausoftware.com/learning/training>

### Check out these additional resources on the Help menu:

**Help > Sample Workbooks**

The sample workbooks contain samples that highlight some of the amazing things you can do with Tableau.

**Help > Community Center**

Find additional resources online in the Community Center. Get help, browse the discussion boards, and see what others are doing with Tableau.

**Help > Help Topics**

View the online help for complete discussions of the features and functions.